

Step 1 :

- **Navigate to the DNS name of the ALB in your browser**
- **You should use https – See the browser address bar in this screenshot**
- **Validation of ALB identity will fail as the browser does not have the root certificate in its trust store**



Warning: Potential Security Risk Ahead

Firefox detected a potential security threat and did not continue to acm-pca-usecase-6-alb-1128675539.us-east-1.elb.amazonaws.com. If you visit this site, attackers could try to steal information like your passwords, emails, or credit card details.

What can you do about it?

The issue is most likely with the website, and there is nothing you can do to resolve it.

If you are on a corporate network or using anti-virus software, you can reach out to the support teams for assistance. You can also notify the website's administrator about the problem.

[Learn more...](#)

[Go Back \(Recommended\)](#)

[Advanced...](#)

☐ Report errors like this to help Mozilla identify and block malicious sites

ACM PCA acm-private-ca-workshop-don x +

https://us-east-1.console.aws.amazon.com/acm-pca/home?region=us-east-1#/certificateAuthorities?arn=arn:aws:acm-pca:us-east-1:certificate-authority~2F3181b0e6...

Certificate manager

Private certificate authority

Private CAs

Create CA Actions

CA common name	Organization	OU	Type	Status
acmpriatecaworkshop.subordinate	mycompany	HR	Subordinate	Deleted
acmpcaroot g1	mycompany	hr	Root	Active
acmsubordinateca g1	mycompany	payroll	Subordinate	Deleted
acmsubordinateca g1	mycompany	payroll	Subordinate	Active
acmpriatecaworkshop.root	mycompany	hr	Root	Deleted

Status CA certificate Revocation configuration Tags Permissions

Subject

Organization (O)	mycompany
Organization Unit (OU)	hr
Country name (C)	US
State or province name	washington
Locality name	seattle
Common Name (CN)	acmpcaroot g1

CA certificate validity

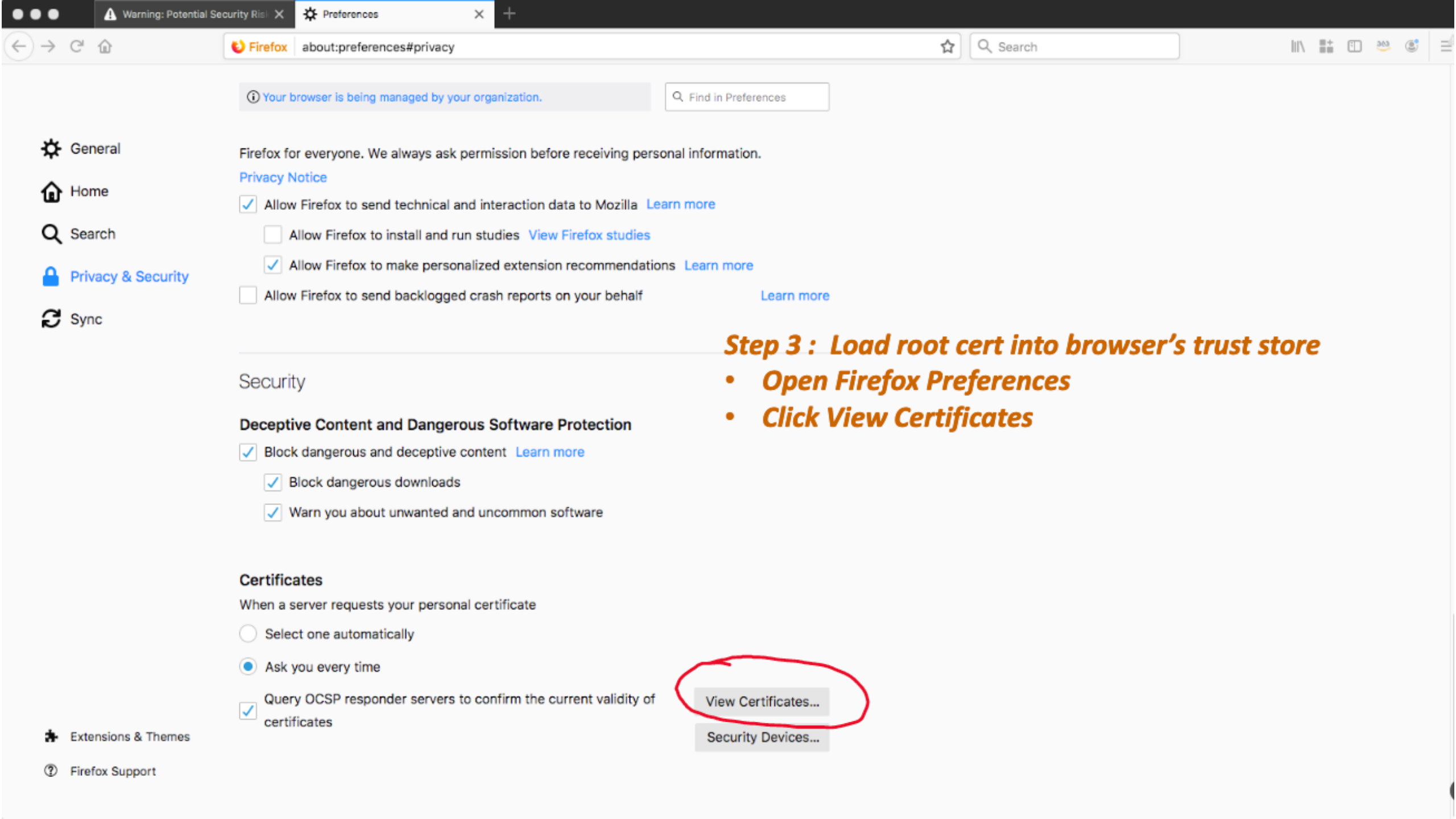
Not after	2029-08-02 17:07:46UTC
Expires in	3651 Days

Additional information

Signature algorithm	SHA256WITHRSA
Serial number	
Certificate body	<pre>-----BEGIN CERTIFICATE----- MIIDPzCCAo+gAwIBAgIRAMx6FKFItNa7k2gaO222bEwDQYJKoZIhvcNAQELBQAw bTElMAkGA1UEBhMCVVMxETABBgNVBAgMCndhc2hpbmd0b24xEDAOBgNVBAMM YXR0bGUxETABBgNVBAoMCW15Y29tcGFueTElMAkGA1UECwwCaHlxJFAUAgNVBAMM DWFjYXJjYXJv3QgZzEwHhcNMjkwODAyMTYwNzQ2WncNMjkwODAyMTYwNzQ2WjBt MQswCQYDVQQGEwJVUzETMBEGA1UECAwKd2FzaGluZ3RvbjEQMA4GA1UEBwwHc2Vh dHRsZTESMBAGA1UECgwJbXljY21wYW55MQswCQYDVQQLDAJocjEwMBQGA1UEAwwN YWNtcGNhcm9vdCBnMTCCASlwdQYJKoZIhvcNAQEBBQADggEPADCCAQoCggEBAJ6o HhM3WOZIDp4GmQszgU92YjnDnWjlZkszmKTZ3qq62J8eAkm8u3+eZYGH70R0azg i5LeyPmLmVochHGFuLuteYdrhclt83Jqgp7XGsXh3GZ/JCOJD8umQ5uxG5JMh+B -----END CERTIFICATE-----</pre>
Export Certificate body to a file	
Certificate chain	A root CA does not have a certificate chain.

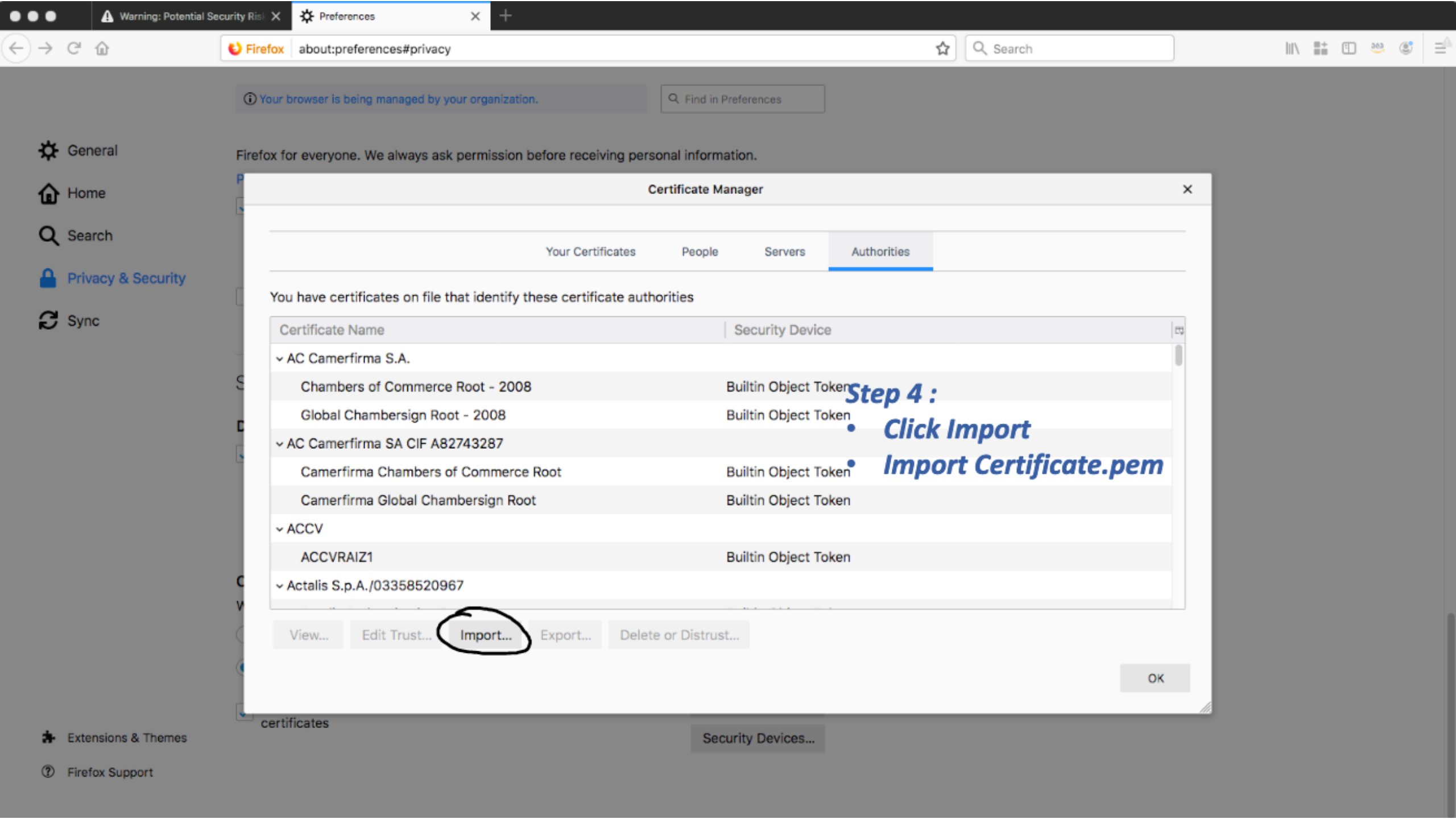
Step 2 :

- Under ACM -> Private CAs
- Select the root CA with common name **acmpcaroot g1**
- Click Export certificate body to a file
- Certificate.pem file gets saved on your laptop



Step 3 : Load root cert into browser's trust store

- Open Firefox Preferences
- Click View Certificates



ⓘ Your browser is being managed by your organization.

Find in Preferences

Firefox for everyone. We always ask permission before receiving personal information.

Certificate Manager

Your CertificatesPeopleServersAuthorities

You have certificates on file that identify these certificate authorities

Certificate Name	Security Device
▼ AC Camerfirma S.A.	
Chambers of Commerce Root - 2008	Builtin Object Token
Global Chambersign Root - 2008	Builtin Object Token
▼ AC Camerfirma SA CIF A82743287	
Camerfirma Chambers of Commerce Root	Builtin Object Token
Camerfirma Global Chambersign Root	Builtin Object Token
▼ ACCV	
ACCVRAIZ1	Builtin Object Token
▼ Actalis S.p.A./03358520967	

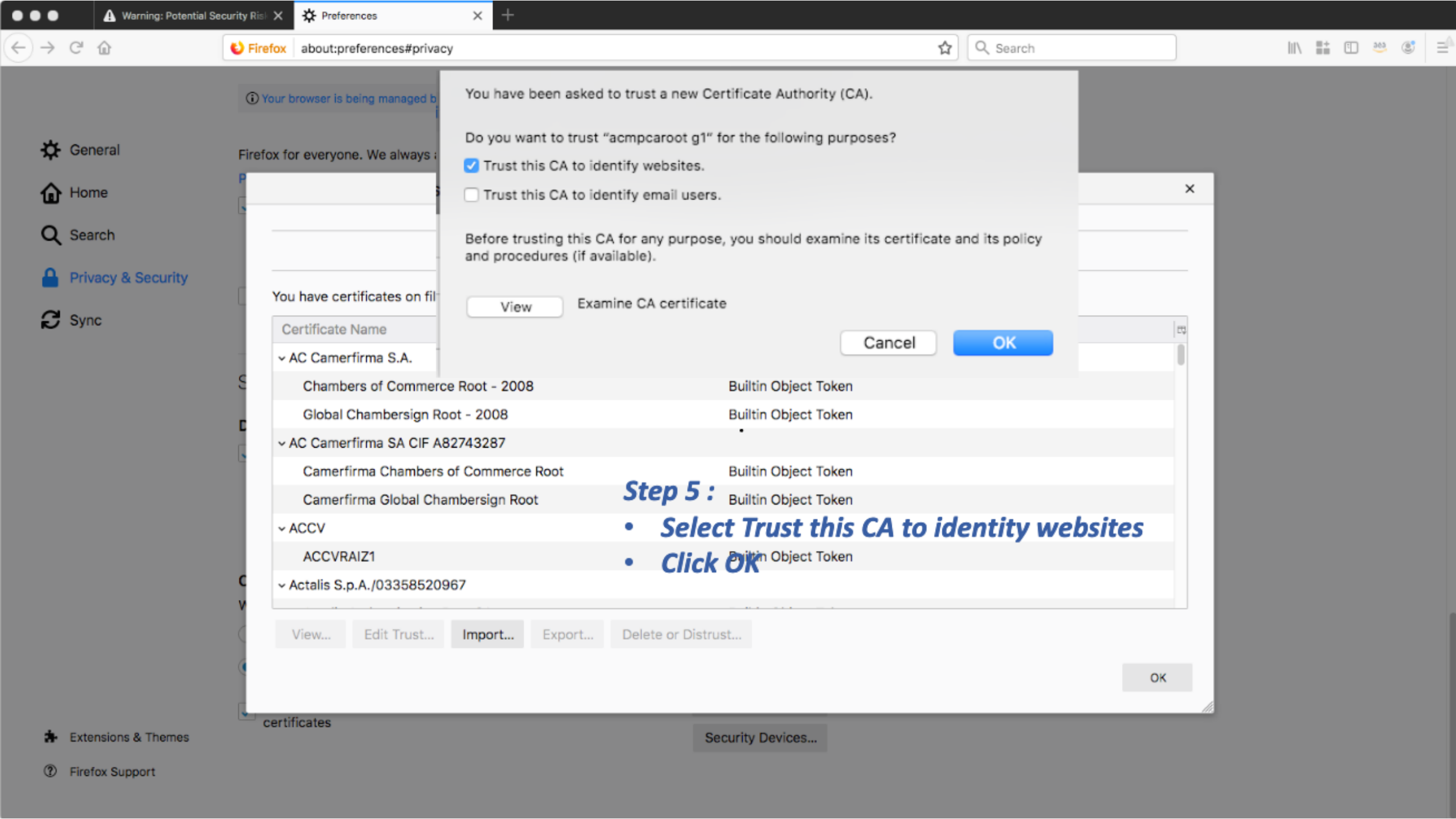
View...Edit Trust...Import...Export...Delete or Distrust...

OK

Step 4 :
• Click Import
• Import Certificate.pem

certificates

Security Devices...



You have been asked to trust a new Certificate Authority (CA).

Do you want to trust "acmpcaroot g1" for the following purposes?

☒ Trust this CA to identify websites.

☐ Trust this CA to identify email users.

Before trusting this CA for any purpose, you should examine its certificate and its policy and procedures (if available).

View

Examine CA certificate

Cancel

OK

Certificate Name

▼ AC Camerfirma S.A.

Chambers of Commerce Root - 2008

Builtin Object Token

Global Chambersign Root - 2008

Builtin Object Token

▼ AC Camerfirma SA CIF A82743287

Camerfirma Chambers of Commerce Root

Builtin Object Token

Camerfirma Global Chambersign Root

Builtin Object Token

▼ ACCV

ACCRAIZ1

Builtin Object Token

▼ Actalis S.p.A./03358520967

View...

Edit Trust...

Import...

Export...

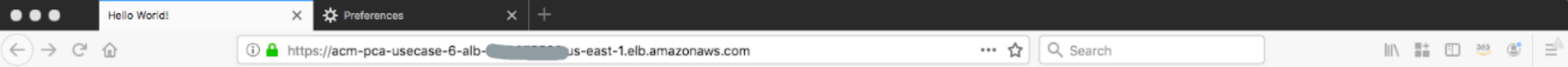
Delete or Distrust...

OK

Step 5 :

- **Select Trust this CA to identity websites**
- **Click OK**

Security Devices...



Hello World!

Step 6 :

- ***Navigate again to the DNS name of the Application load balancer***
- ***You should use https – See the browser address bar in this screenshot***
- ***You should see Hello World on the screen***
- ***Also the green lock icon on the browser's address bar indicates that the identity of the ALB domain is validated and the certificate is trusted by the browser***